

## Celiac Disease Investigation with Marsh Classification in Paediatric Population

Muzammal Ghafoor, Farooq Ikram, Saeed Zaman\*, Junaid Bashir, Samina Tabassum\*\*, Muhammad Waleed Babar

Combined Military Hospital/National University of Medical Sciences (NUMS), Rawalpindi Pakistan, \*Combined Military Hospital Kharian/National University of Medical Sciences (NUMS) Pakistan, \*\*Combined Military Hospital Bahawalpur/National University of Medical Sciences (NUMS), Pakistan,

### ABSTRACT

**Objective:** To determine the celiac disease using Marsh classification in the paediatric population at the Pak Emirates Military Hospital.

**Study Design:** Cross-sectional study.

**Place and Duration of Study:** Department of Paediatrics, Pak Emirates Military Hospital Rawalpindi Pakistan, from Aug 2020 to Mar 2021.

**Methodology:** Patients of either gender aged 1 to 14 years with three or more clinical features of celiac disease such as chronic diarrhoea, any degree of malnutrition, short stature, abdominal distension, anaemia, and clubbing at the time of admission, were included in this study.

**Results:** There were 97 patients in this study. Among them, 61 (62.9%) were males, and 36 (37.1%) were females. There were 56 (57.7%) patients who were histology positive and 41 (42.3%) patients who were histology negative. There were 37 (38.1%) patients in Marsh III a, 15 (15.5%) were in Marsh III b, and 4 (4.1%) patients were in the Marsh III c category. Gender distribution showed that 33 (58.9%) males were positive compared to 23 (41.1%) females. Even though the frequency was higher among males, the difference was not statistically significant ( $p$ -value=0.23).

**Conclusion:** Celiac disease is a possible reason for anaemia among patients with iron deficiency anaemia of unknown origin. Therefore, the histopathological diagnosis should be completed when celiac disease is suspected.

**Keywords:** Celiac disease, Histopathology, Marsh classification.

**How to Cite This Article:** Ghafoor M, Ikram F, Khattak SZ, Bashir J, Tabassum S, Babar MW. Celiac Disease Investigation with Marsh Classification in Paediatric Population. *Pak Armed Forces Med J* 2022; 72(4): 1164-1167. DOI: <https://doi.org/10.51253/pafmj.v72i4.7212>

This is an Open Access article distributed under the terms of the Creative Commons Attribution License (<https://creativecommons.org/licenses/by-nc/4.0/>), which permits unrestricted use, distribution, and reproduction in any medium, provided the original work is properly cited.

## INTRODUCTION

Celiac disease is an autoimmune, multi-system illness caused by interaction among environmental and genetic issues. The significant features of the disease are malabsorption and villous atrophy that occur in the intestinal system when a person ingests food which contains gluten.<sup>1</sup> To obtain a confirmed identification of celiac disease, a biopsy of the small intestine is often documented to be the preferred method of diagnosis. Celiac disease has been noted to have a varied presentation.<sup>2-3</sup> Subsequently, the celiac disease diagnosis could be missed or delayed.<sup>4</sup> This is an issue particularly for the developing world, as the resources are already scarce. Literature shows that conducting an endoscopic small bowel biopsy has rendered celiac disease detection simpler.<sup>5</sup> Hence, it has been the "gold standard". The confirmed diagnosis of celiac disease is based on the small intestine's biopsy showing an increased proportion of crypt hyperplasia.<sup>6</sup> The gravity of these injuries ranges from the III Marsh stage to above and has essentially been deliberated to be

suggestive of celiac disease.<sup>7</sup> However, a biopsy may not always be feasible in developing countries. Therefore, physicians have relied on serological tests to diagnose celiac disease in such a scenario.

Celiac disease has been noted among Asians in Pakistan, India and Iran.<sup>8-9</sup> Literature shows that celiac disease prevalence has been altered over previous decades, and this is attributed primarily to highly sensitive serologic tests. Nevertheless, the problem is that there is insufficient research conducted in this area; the investigative value of the clinical utility and the endoscopic markers is rather unclear. Presently, about 3 out of 4 celiac disease patients stay undiagnosed. This is primarily because the physicians do not identify the atypical presentations, there is a scarcity of extensive screening among the high-risk people, and there may be wrong labelling as irritable bowel syndrome. There is a need for a higher diagnosis rate to prevent celiac disease complications, for example, anaemia or cancer.<sup>8-10</sup>

Several studies have found the varying frequency of diagnosed cases of celiac disease on histopathology markers. However, there have been limited studies conducted over the last five years to study histopatho-

**Correspondence:** Dr Muzammal Ghafoor, Department of Paediatrics, Combined Military Hospital, Rawalpindi, Pakistan

Received: 10 Aug 2021; revision received: 10 Feb 2022; accepted: 21 Feb 2022

logy results, as there is a dearth of local data in Pakistani context.

**METHODOLOGY**

This cross-sectional study was conducted at the Department of Pediatrics, Pak Emirates Military Hospital Rawalpindi Pakistan, from August 2020 to March 2021, after approval from the Institute Ethical Committee (ERC approval certificate number: A/28/ EC/ 31/9/20). The sample size was calculated using WHO calculator by taking the prevalence of celiac disease 71.6%, using histopathology.<sup>11</sup> With a margin of error of 9% and the noted confidence level of 95% was selected. The sample thus estimated was 97. Sampling was done using a non-probability convenient sampling technique.

**Inclusion Criteria:** Patients of either gender aged between 1 to 14 years who presented at Pak Emirates Military Hospital Rawalpindi with three or more clinical features of celiac disease such as chronic diarrhoea, any degree of malnutrition, short stature, abdominal distension, anaemia, and clubbing at time of admission, were included in the study.

**Exclusion Criteria:** Patients who had asthma, type 1 diabetes, abdominal tuberculosis, congenital heart anomalies, colorectal neoplasia, inflammatory bowel disease, cystic fibrosis, children already on a wheat-free diet, history of premature birth and patients who had short height were excluded from the study.

Marsh-Oberhuber grading and histopathology showing (Marsh III) were taken as diagnostic of celiac disease. Informed consent was noted from all parents after we had fully disclosed the risk profile and benefits of the study. Data were collected, a unique identifier was assigned to each patient, and strict confidentiality was maintained throughout the study. Strict ICH good clinical practice guidelines were followed. This study was HIPAA compliant. A brief history of demographic information was taken.

Statistical Package for Social Sciences (SPSS) version 27.0 was used for the data analysis. Mean and standard deviation were estimated for continuous covariates. Frequency and percentages were analyzed for gender, and celiac disease was confirmed on histopathology (Positive/Negative). The chi-square test observed the disparity among the strata of patients. The *p*-value of ≤0.05 was considered significant.

**RESULTS**

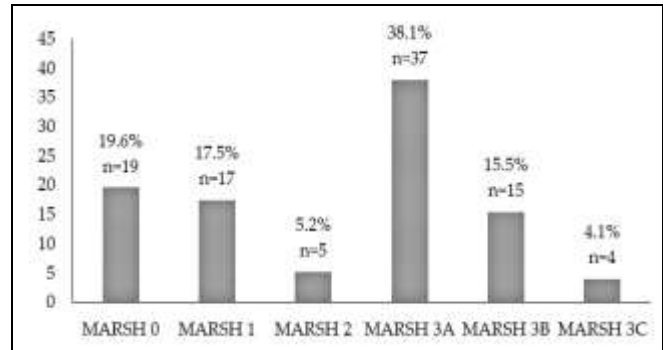
There were 97 patients in this study. Among them, 61 (62.9%) were males, and 36 (37.1%) were

females. Patients were divided into two categories: 1 to 7 years of age and 8 to 14 years of age. There were 72 (74.2%) patients who fit the younger age strata of 1 to 7 years and 25 (25.8%) patients between 8 to 14 years of age. In addition, there were 56 (57.7%) patients who were histology positive and 41 (42.3%) patients who were histology negative (Table-I).

**Table-I: Characteristics of the Study Sample (n=97)**

Characteristics	n (%)
<b>Age Groups</b>	
1-7 years	72 (74.2)
8 - 14 years	25 (25.8)
<b>Gender</b>	
Male	61 (62.9)
Female	36 (37.1)
<b>Histopathology</b>	
Positive	56 (57.7)
Negative	41 (42.3)

There were 19 (19.6%) patients who belonged to Marsh-0, 17 (17.5%) patients were in Marsh-I, 5 (5.2%) patients were in the Marsh-II category, 37 (38.1%) patients were in Marsh-IIIa, 15 (15.5%) were in Marsh-IIIb, and 4 (4.1%) patients were in Marsh-IIIc category (Figure).



**Figure: The Distribution of Marsh Category (n=97)**

There was no significant difference between the age groups and their histopathology results (*p*-value = 0.51). The frequency of positive cases on histopathology showed that 42 (58.3%) cases were between 1 to 7 years of age, whereas 14 (38.8%) positive patients were 8 to 14 years of age. Looking at the gender distribution, we noted that 33 (58.9%) males were positive compared to 23 (41.1%) females. Even though the frequency was higher among males, the difference was not statistically significant (*p*-value = 0.23) (Table-II).

**DISCUSSION**

There were 57.73% positive cases of celiac disease based on the histopathology results and 41 negative

cases. The frequency of celiac disease was higher among males and younger patients (1 to 7 years of age). This brings to mind whether most female patients are being brought to the hospital or not. Thus the male preponderance observed in this study could result from selection bias. This is something which could be explored further in future studies. Celiac disease (celiac disease) is an enteropathy that is immune-mediated and caused by eating grains containing gluten, such as rye, barley and wheat, in genetically susceptible people.

**Table-II: Distribution of Age and Gender According to Histopathology Results (n=97)**

Characteristics	Histopathology Positive n (%)	Histopathology Negative n (%)	p-value
<b>Age Group</b>			
1 - 7 years	42 (75.0)	30 (73.2)	0.51
8 - 14 years	14 (25.0)	11 (26.8)	
<b>Gender</b>			
Male	33 (58.9)	28 (68.3)	0.23
Females	23 (41.1)	13 (31.7)	
Total	56 (100)	41 (100)	

Iron deficiency anaemia might be the initial presentation of celiac disease.<sup>12,13</sup> Mansoor *et al.* conducted a study in which 20 of 47 patients (42%) had biopsy results consistent with celiac disease. The proportion found in our study was slightly higher than Mansoor *et al.* study.<sup>14</sup> Ackerman *et al.* found that patients with celiac disease were younger, had lower mean haemoglobin levels, and had much more incidents of lengthier periods of anaemia and diarrhoea as compared to those who did not have celiac disease.<sup>15</sup> Another study by Grisolo *et al.*<sup>16</sup> found only 8.7% with celiac disease. This study found no significant disparity when the scientists studied reports of incidents of diarrhoea, weight loss, abdominal pain, vomiting, nausea, aspirin or menopausal status or NSAID use, along with the status of celiac disease.<sup>16</sup> This brings to attention the need to know how diverse the celiac disease presentation could be. The physicians must remember to check for celiac disease as a differential diagnosis. This is further corroborated by the study conducted by Cekin *et al.*<sup>17</sup> found that it was noted that histopathologic findings were associated with celiac disease among 6 out of 84 subjects (7.14%). However, that study showed that after 180 days of a gluten-free diet, the patient's average levels of haemoglobin improved from 10.3±0.64 to 12.97±1.48 g/dl (*p* value=0.002).<sup>17</sup> The treatment for celiac disease can yield beneficial results if the disease is caught in

time.<sup>18</sup> Ucerdag *et al.* showed that 6 subjects (7.8%) and 1 control (0.8%) had histopathologic outcomes of celiac disease (*p* value=0.02). 19 Rabbani *et al.*<sup>20</sup> reported an equal gender (Male: Female) distribution (52% vs 48%) in children who had presented at Children Hospital & Institute of Child Health, Multan, Pakistan. The distribution in our study showed that 61 (62.9%) were males and 36 (37.1%) were females. Similarly, Dutta *et al.*<sup>21</sup> (59.8%) and Emami *et al.*<sup>22</sup> (62%) also described male predominance among Indian and Irani patients. In contrast, Jamro *et al.*<sup>23</sup> conveyed a female predominance (71.4%) among children in Pakistani. Moreover, Lodhi *et al.*<sup>13</sup> noted a high prevalence (71.58%) of positive cases of celiac disease among patients presenting with suspected cases of celiac disease. There was a paper by Hashmi *et al.*<sup>24</sup> found a comparable prevalence was noted to be at 63.33% among youngsters who had presented at the Benazir Bhutto Hospital, Rawalpindi.

Our study showed that 37 (38.1%) patients were in Marsh IIIa, 15 (15.5%) were in Marsh IIIc, and 4 (4.1%) patients were in the Marsh IIIc category. The new knowledge thus created by our study demonstrates that many patients in our setting are in the Marsh IIIa classification. Therefore, underlining the significance of histopathological diagnosis when celiac disease is suspected. Lodhi *et al.*<sup>13</sup> had found that Marsh IIIb (atrophy of the partial villous) had been the utmost common histological identification (37.9%), which Marsh IIIc then tails (26.3%) and Marsh IIIa (atrophy of the focal villous=7.4%). Dutta *et al.*<sup>21</sup> described that MARSH IIIc was the most recurrent finding (38.39%), which was followed by Marsh IIIb (33.34%) and then usual mucosa (22.22%) among the celiac disease patients in India. Jamro *et al.*<sup>23</sup> researched that Marsh II (64.3%) and MARSH III (35.7%) were the most frequently observed histological diagnosis among subjects presenting at the Shaheed Mohtrama Benazir Bhutto Hospital. Emami *et al.*<sup>22</sup> had narrated that Marsh IIIb and Marsh IIIa were the common histological discoveries noted among 38% of subjects in the Irani population sample tailed by Marsh IIIc (24%).

## CONCLUSION

The developing world faces tremendous health care challenges. This makes it crucial for clinicians to deliberate celiac disease as a probable reason for anaemia among patients with iron deficiency anaemia of incomprehensible origin. In addition, histopathological diagnosis needs to be completed when celiac disease is suspected. Resource-scarce settings are crucial and could be an imperative tool in treating such patients.

**Conflict of Interest:** None.

**Author's Contribution**

MG: Data collection, data analysis, results and discussion of literature, FI: Data analysis, data interpretation, discussion of literature and review, SZK: Review of article, results and correction, JB: Data analysis and results review, ST: Discussion and review of article, MWB: Review of article, discussion and correction.

**REFERENCES**

1. Bekdas M, Unal F, Demircioglu F. Investigation of celiac disease according to Marsh classification in childhood. *Bangladesh J Med Sci* 2017; 16(2): 259-265.
2. Lerardi E, Losurdo G, Piscitelli D, Giorgio F, Sorrentino C, Principi M, et al. Seronegative celiac disease: where is the specific setting? *Gastroenterol Hepatol Bed Bench* 2015; 8(1): 110-116.
3. Parzanese I, Qehajaj D, Patrinicola F, Aralica M, Chiriva-Internati M, Stifter S, et al. Celiac disease: From pathophysiology to treatment. *World J Gastrointest Pathophysiol* 2017; 8(2): 27-38.
4. Ciaccio EJ, Bhagat G, Lewis SK. Quantitative image analysis of celiac disease. *World J Gastroenterol* 2015; 21: 2577-2581.
5. Giorgio F, Principi M, Losurdo G, Piscitelli D. Seronegative celiac disease and immunoglobulin deficiency: where to look in the submerged iceberg? *Nutrients* 2015; 7(2): 7486-7504.
6. Lundin KE, Wijmenga C. Coeliac disease and autoimmune disease-genetic overlap and screening. *Nat Rev Gastroenterol Hepatol* 2015; 12(2): 507-515.
7. Elli L, Rossi V, Conte D, Ronchi A, Tomba C. Increased mercury levels in patients with celiac disease following a gluten-free regimen. *Gastroenterol Res Pract* 2015; 2015(1): 953042.
8. Farina MH, Kumar Mandhwani R, Hassan Luck N, Abbas Z, Mubarak M, Laeeq SM, et al. Clinicopathological study of seronegative celiac disease in adults in pakistan: a pilot study. *Middle East J Dig Dis* 2017; 9(2): 94-99.
9. Elli L, Zini E, Tomba C, Bardella MT, Bosari S, Conte D, et al. Histological evaluation of duodenal biopsies from coeliac patients: the need for different grading criteria during follow-up. *BMC Gastroenterol* 2015; 115(2): 133-136.
10. Mills JR, Murray JA. Contemporary celiac disease diagnosis: is a biopsy avoidable? *Curr Opin Gastroenterol* 2016; 32: 80-85
11. Tye-Din JA, Galipeau HJ, Agardh D. Celiac Disease: A review of current concepts in pathogenesis, prevention, and Novel Therapies. *Front Pediatr* 2018; 6(1): 350-371.
12. Popp A, Kivelä L, Fuchs V, Kurppa K. Diagnosing celiac disease: towards wide-scale screening and serology-based criteria? *Gastroenterol Res Pract* 2019; 2019(1): 2916024.
13. Balaban DV, Popp A, Vasilescu F, Haidautu D, Purcarea RM, Jinga M. Diagnostic yield of endoscopic markers for celiac disease. *J Med Life* 2015; 8(4): 452-457.
14. Rosa RM, Ferrari Mde L, Pedrosa MS, Ribeiro GM, Brasileiro-Filho G. Correlation of endoscopic and histological features in adults with suspected celiac disease in a referral center of Minas Gerais, Brazil. *Arq Gastroenterol* 2014; 51(4): 290-296.
15. Lodhi MA, Saleem Z, Ayub A, Munir T, Hassan S. Diagnostic accuracy of IgA anti-tissue transglutaminase antibody in the diagnosis of celiac disease taking histopathology as gold standard. *Pak Armed Forces Med* 2021; 71(2): 418-421.
16. Mansoor AA, Strak SK. Prevalence of celiac disease among patients with iron deficiency anemia: Personal experience and review of literature. *Pak J Med Sci* 2005; 21(4): 413-416.
17. Ackerman Z, Eliakim R, Stalnikowicz R, Rachmilewitz D. Small bowel biopsy in the endoscopic evaluation of adults with iron deficiency anemia. *Am J Gastroenterol* 1996; 91: 2099-2102.
18. Grisolano SW, Oxentenko AS, Murray JA, Burgart LJ, Dierkhsing RA, Alexander JA. The usefulness of routine small bowel biopsies in evaluation of iron deficiency anemia. *J Clin Gastroenterol* 2004; 38(2): 756-760
19. Çekin AH, Çekin Y, Sezer C. Celiac disease prevalence in patients with iron deficiency anemia. *Turk J Gastroenterol* 2012; 23(5): 490-495.
20. Caio G, Volta U, Sapone A, Leffler DA, Giorgio RD, Catassi C, et al. Celiac disease: a comprehensive current review. *BMC Med* 2019; 17(2): 142-153.
21. Uçardağ D, Güliter S, Celeni O, Yakaryilmaz F, Atasoy P. Celiac disease prevalence in patients with iron deficiency anemia of obscure origin. *Turk J Gastroenterol* 2009; 20(4): 266-270.
22. Rabbani MW, Aziz MT, Ali I, Khan WI, Ali Z, Aslam M. Diagnostic usefulness of anti-tissue transglutaminase in celiac disease: correlation with intestinal mucosal biopsy. *Pak J Med Sci* 2011; 27(3): 599-602.
23. Dutta AK, Chacko A, Avinash B. Suboptimal performance of IgG anti-tissue transglutaminase in the diagnosis of celiac disease in a tropical country. *Dig Dis Sci* 2010; 55(3): 698-702.
24. Emami MH, Karimi S, Kouhestani S, Hashemi M, Taheri H. Diagnostic accuracy of IgA anti-tissue transglutaminase in patients suspected of having coeliac disease in Iran. *J Gastrointest Liver Dis* 2008; 17(2): 141-146.